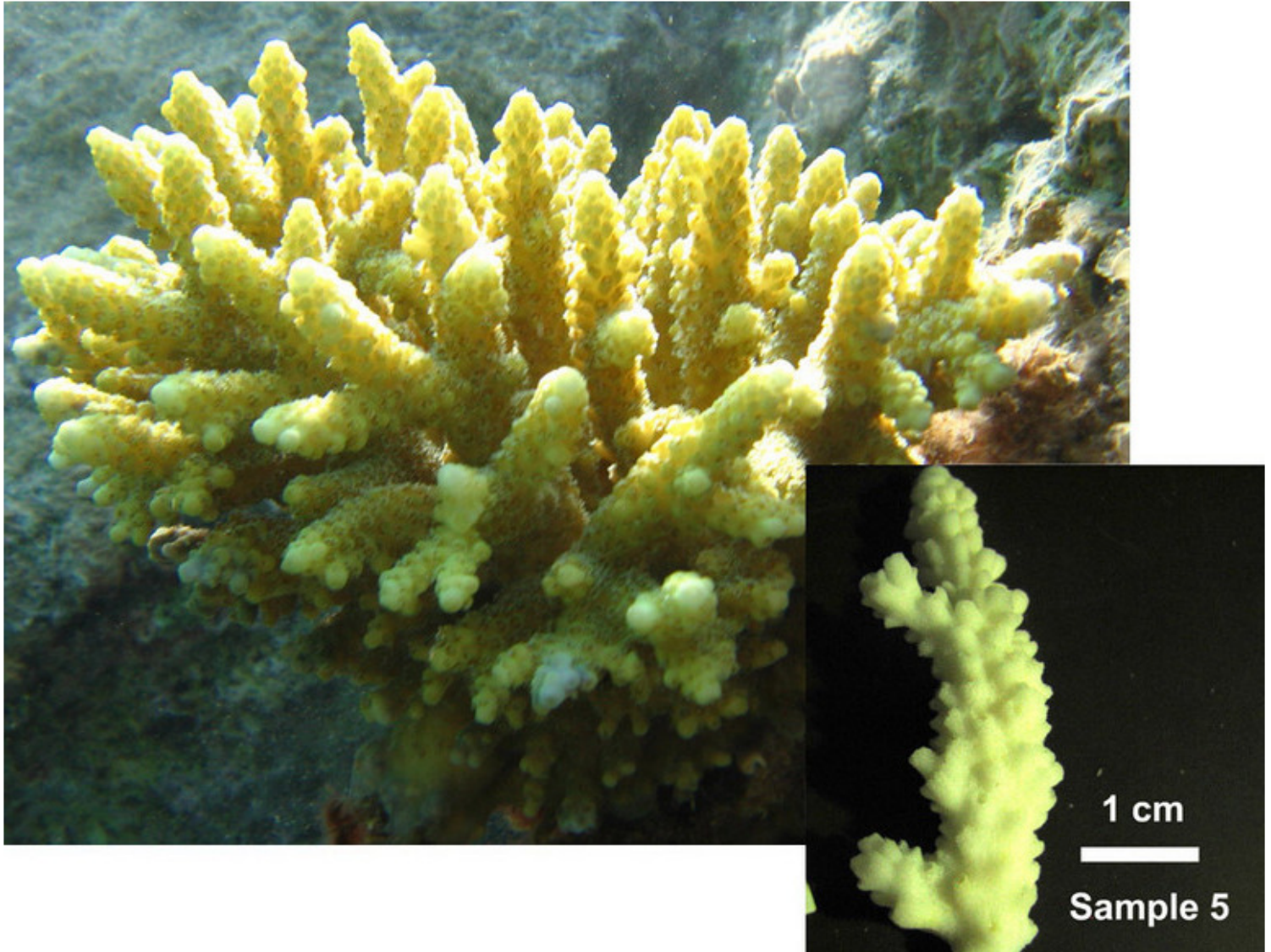


Key to expected Red Sea *Acroporidae* species (after Veron, 2000)*

Only species reported or expected in our region. For full key, be advised to use the original key: p. 447-459



Colony with axial corallites.

Colony digitate [not branching for several cms]

-----Colony forming clumps.

-----Branches cylindrical (**Group 20**)

--Axial corallites larger than radial corallites

= *A. anthocercis*

-----Axial corallites small = *A. ocellata*

-----Axial corallites dome-shaped.

-----Radial corallites appressed.

-----Branches radiate from a basal point = *A. arabensis*

Description: Colonies are digitate with upright branches which usually divide infrequently and taper only towards their ends. Axial corallites are conspicuous and dome-shaped. Radial corallites are strongly appressed and thick walled, with small openings. **Colour:** Brown or grey with pale branch ends. Source: "Corals of the World online" for *A. arabensis*